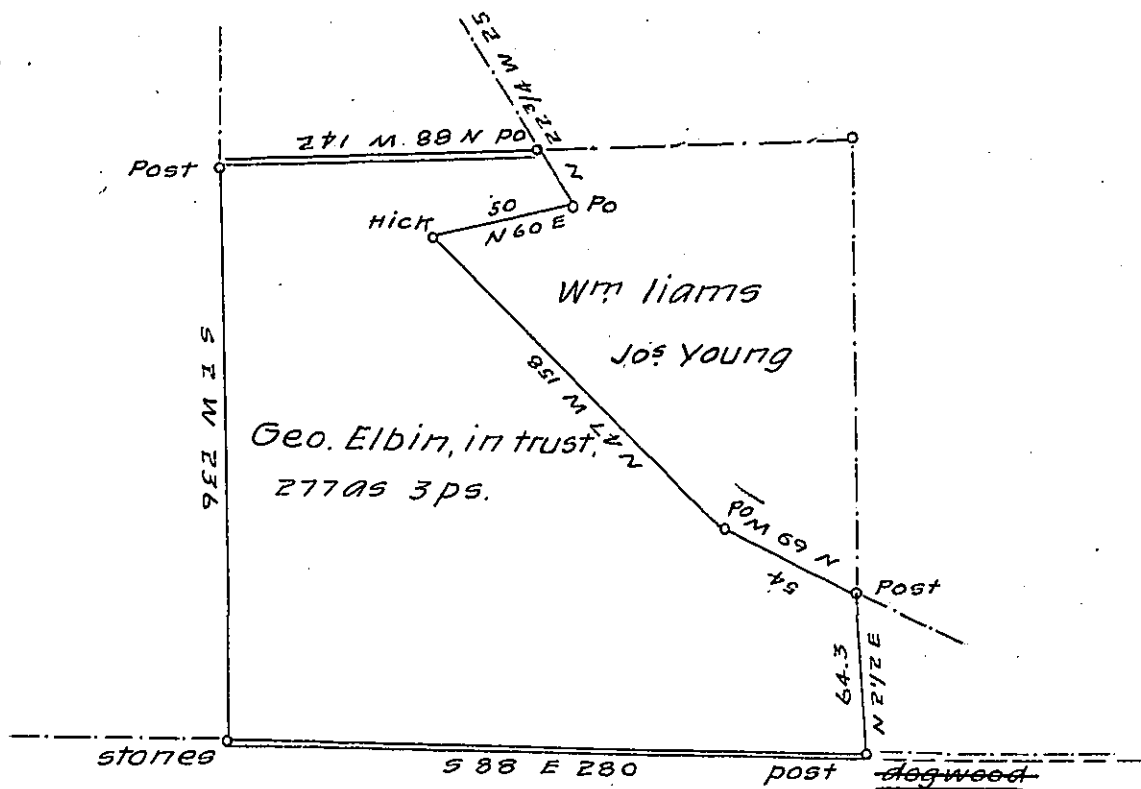


Geo Elbin in trust &c.
in right of Stephen Young



Maryland line

Situate in Southampton township Bedford County Con-
taining 277 Acres 3 perches and the usual Allowance of Six per
Cent for Roads &c. Surveyed for Geo. Elbin in trust &c. Being a
part of larger tract of land, originally Surveyed On Warrant
granted to Joseph Young, dated 21st day of Feby. A.D. 1794

Saml Ketterman C.S.

To J. M. Campbell Esqr.

S.G.

IN TESTIMONY that the above is a copy of the original remaining on file in
the Department of Internal Affairs of Pennsylvania, made
conformably to an Act of Assembly approved the 16th day of
February, 1833, I have hereunto set my Hand and caused
the Seal of said Department to be affixed at Harrisburg,
this twenty-seventh day of September 1904

Joseph R. Brown
Secretary of Internal Affairs.